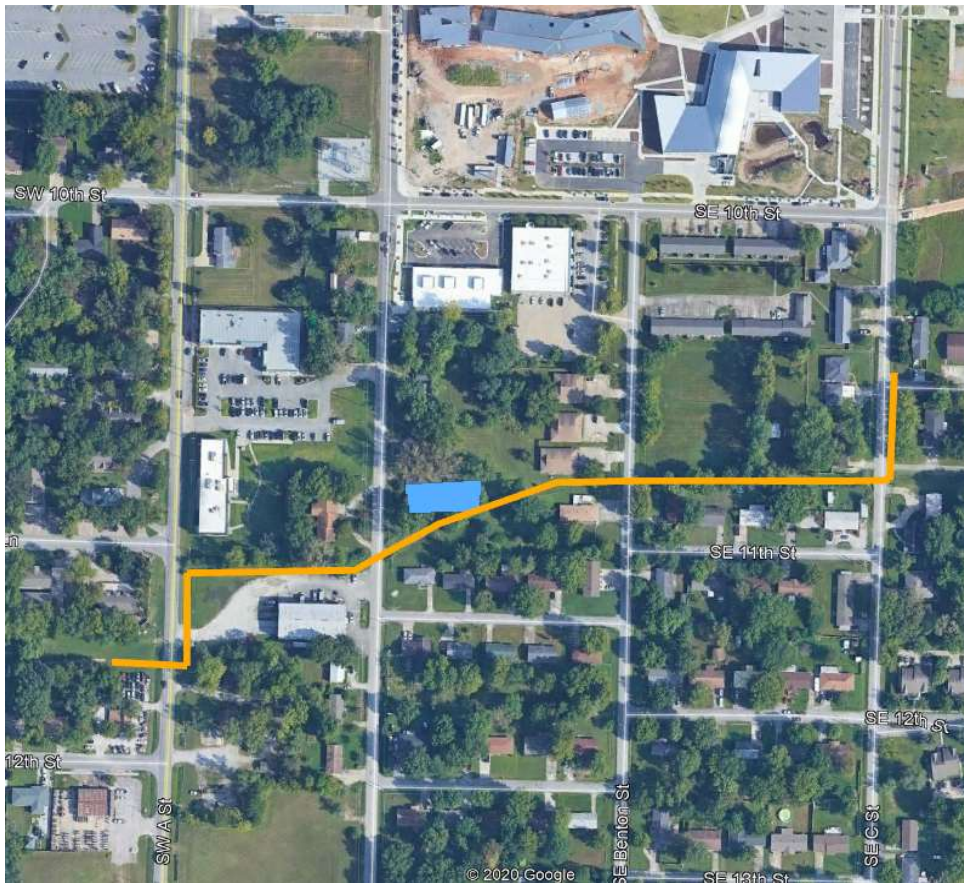




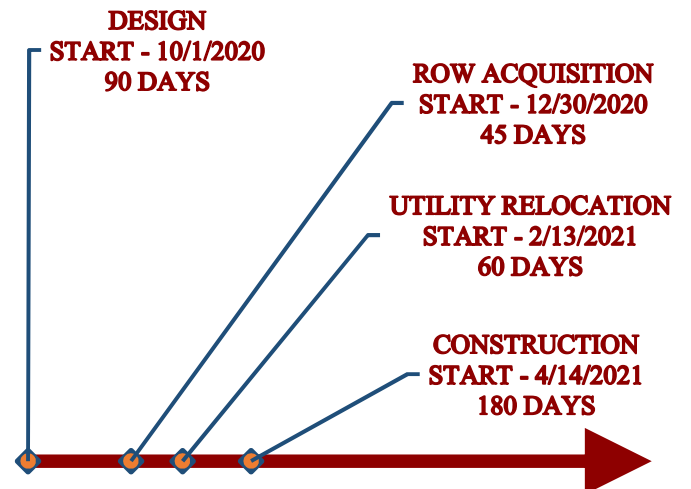
# Little Osage Trib 2 Phase 2

Channelization and bridge improvements along the upper portions of this tributary.

## CONCEPTUAL



## PROJECT TIMELINE



## ESTIMATED COSTS

TASK	ESTIMATED COST
DESIGN	\$ 120,000.00
ROW ACQUISITION	\$ 50,000.00
UTILITY RELOCATION	\$ 150,000.00
CONSTRUCTION	\$ 1,500,000.00
<b>PROJECT TOTAL:</b>	<b>\$ 1,820,000.00</b>